



*Vol 15*

# *THE MAIN LINE*



*No 3*

*The Monthly Bulletin  
of the New England Electric Railway Historical Society Libraries*

May 2023

## **Goings On At Seashore -**

**Note Change of Date and Time for June Library Workshop** - 9:00 AM - 1 PM on Friday, June 9, 2023. Please note the time and day change as approved by the Library Committee at its meeting in May. This will avoid weekend traffic for those coming "from away."



The Museum's Wednesday-Sunday operating schedule began on June 1, 2023 and will continue through October 30, 2023



## **Upcoming Events:**

Saturday, June 10th: Pride Day! \$3 from each ticket will benefit Out Maine.

Sunday, June 11th: Dog Appreciation Day.

Saturday-Sunday, June 17th-18th: "I've Driven By Several Times But I've Never Been Down the Driveway Days." Free Admission to York County residents who have never been to STM.

Sunday, June 18th: Father's Day: Fathers' admission is free. Behind the scenes shop tours from 11AM-1PM

Saturday-Sunday June 24th-June 25th: Dino Trolley!

For further additional event information and ongoing information throughout the year be sure to check: <https://trolleymuseum.org/events/> .

## **Advance FYI for 2024-**

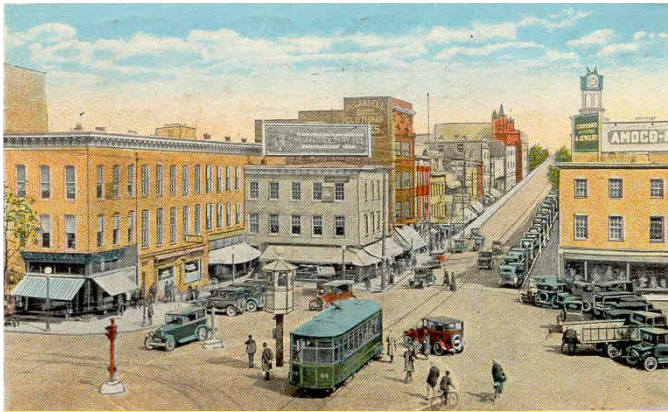
### **Friday-Sunday March 1-3, 2024:**

Seashore Trolley Museum will be hosting Northeast Association of Trolley Organization's Winterfest.



## Do You Recognize ?

Last Month's Do You Recognize -

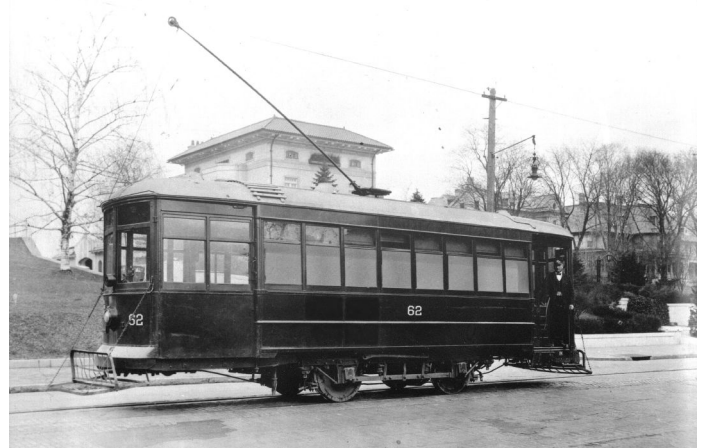


Colorized Postcard Nearside Car No. 64 in The Public Square of Hagerstown. - JG Brill (1912)

and various segments has “endless” mergers and name changes - Frederick & Middletown Railway, Myersville & Catoctin Railway, Hagerstown Railway, Frederick Railroad, Hagerstown & Frederick Railway, Potomac Public Service Company until, last but not least, the final name was adopted in 1923 as Potomac Edison. Actually that wasn't quite the end of name changing as Potomac Edison was rebranded as Allegheny Power in the 1990s but by then they were long out of the trolley business.

The construction of its predecessor lines began in early 1896 with the

This railway was a suburban trolley line, later an electric interurban, in the mid-Atlantic region that was originally known as the Frederick & Middletown Railway, the name of its endpoint cities. Ultimately the system bearing its name served parts of three states. This railway



Car No. 62 is a Nearside car - JG Brill (1914)

No. 62 is a Nearside car probably in Hagerstown. Nearside car referring to a loading arrangement that allowed passengers to enter and leave through the front entrance when the car stopped before an intersection, the near-side, rather than after the intersection, the far-side. The design, or at least first order of such, is attributed to Thomas Mitten who was General Manager of the International Railway Company. Nearly all Nearside cars were manufactured by JG Brill at the Kuhlman plant.



Car No. 169 - JG Brill (1917)  
in Hagerstown on 6-16-1940

building of a line to serve a mountaintop resort, also built by the railway, intended to provide traffic for the line. Service between Frederick and Braddock Heights commenced on August 22, 1896. Extensions were added to the system and by 1904 the end points reflected in the later H&F name were connected although the actual name was

not adopted until a merger in 1911..  
Our line also owned and operated two amusement parks, both as business ventures in their own right, and as traffic generators for the trolley business

The company had always had a side business of selling electricity and the railway's owner decided to expand the electric utility side of the business. During 1916 and 1917 additional electric utilities were acquired, some with electric railway components. Finally in 1923 a neighboring utility, electricity and railway, was absorbed and the name of this utility was applied to the entire system. Prior to the merger the latter company had formed a bus subsidiary, named after the front range of the Appalachian Mountains, that became a major competitor to the original interurban line. This motor coach system was a major connector for the burgeoning



No. 171 - JG Brill (1919) leaving Frederick enroute Thurmont on 5-18-1941 The Potomac Edison terminal is behind #171.



Freight Motor No. 5 - Company Shops (1920)

Greyhound Lines system and was ultimately absorbed by Greyhound in 1955. Most of the rail lines were abandoned during the depression with some passenger service surviving until 1954. Freight carried on, but the electric lines were removed on the one remaining line in 1955 and diesel equipment was substituted. Further track was removed in 1958 and all service was stopped on April 26, 1961.

The company continues to exist as a subsidiary of Allegheny Power, a large regional electricity supplier.



This Month's do You Recognize -

We are in New England again with this interesting little railway. Our railway was one of its state's last six electric railways which, from 1911 to 1937, connected its namesake city with the neighboring namesake towns. Owned by the state's major power company, it was the first of three traction properties of that corporation.





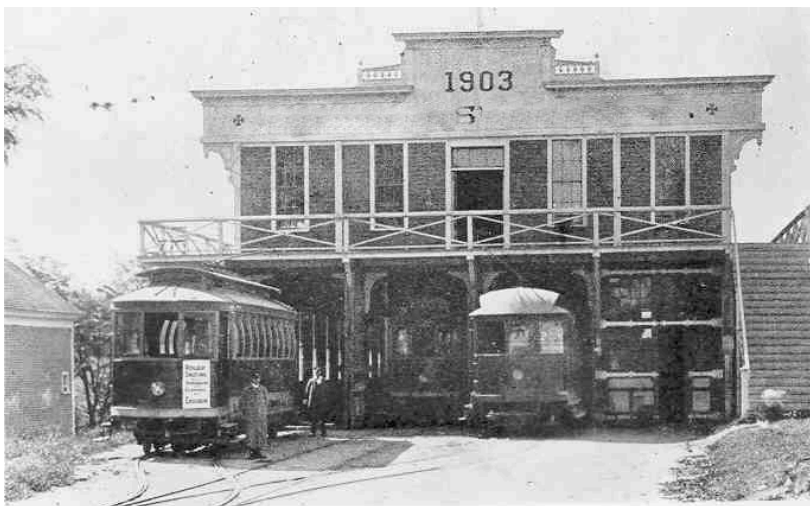
In this image from a colorized postcard is the street railway's #1, a 14-bench open built by Stephenson in 1902 and purchased second-hand in 1903. This scene is by the railroad station in the square of one of the namesake towns.

Formed through a consolidation of a railroad company, which started as a horse car line in 1888, and a street railway company, which began operation in 1903, it was primarily a passenger carrier throughout its existence, although for a number of years it did provide terminal

facilities for the freight and express service operated by a connecting street railway company. Only slightly over ten miles long this railway connected it namesake city and towns over a modern first-rate system from 1911 through 1937. Our line and two adjacent lines comprised a group of lines that made up the



Car #11 - 12-bench open - Briggs (1900)



Carbarn in namesake town (1906)

eastern end of a continuous electric railway route of some 400 miles from New York City across the northeast.

As of 1893, the equipment of the originally horse car line consisted of three motor cars, five trailers and the two barges. A 20-ft box was added in 1894.

By 1896, the equipment included:

Box cars equipped for electric power 3

Open cars equipped for electric power 4

Open trailers 4

Total passenger cars 11

Work cars 1

Snow plows 1

Carts and Snow sleds 1

Barges 2



No. #60, 31 ft. safety car - JG Brill (1922) acquired 1931 passing No. 50, 33 ft. closed car - Kuhlman (1918) in namesake city

The road was 4.36 miles in length, plus .073 mile of sidings and turnouts, for a total of 4.443 miles of track.

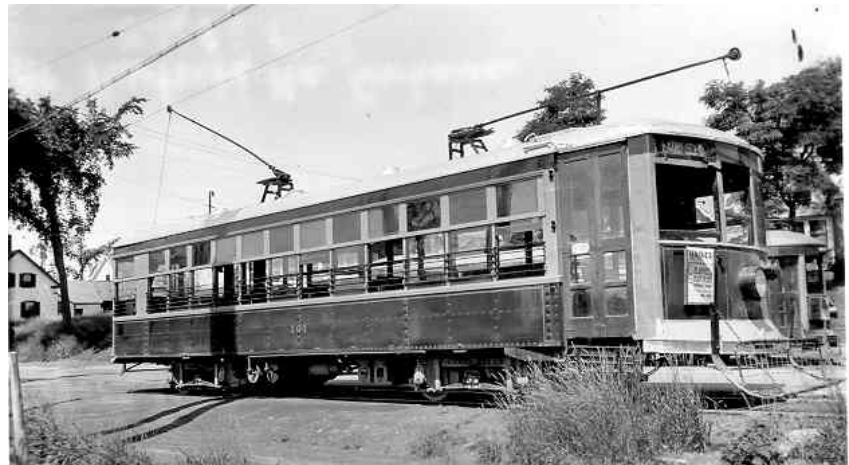
By 1902 the line included four closed and five open cars and one snow plow, mostly the passenger equipment was a product of the Briggs Carriage Company. Two 25-ft box acquired from the Boston Elevated in 1900 had been built as sample cars for the Elevated by Briggs c 1899.



Line car No. #33- Company Shops (1924)

The second half of the 1911 consolidation that formed our line also acquired Briggs products in the form of four 25-ft Duplexes in 1903. This

lines first equipment also included two used 14 bench Stephenson double-truck opens. Service commenced on July 2, 1903 over a main line of 5.4 miles in length, with a total of .35 mile of sidings and turnouts.

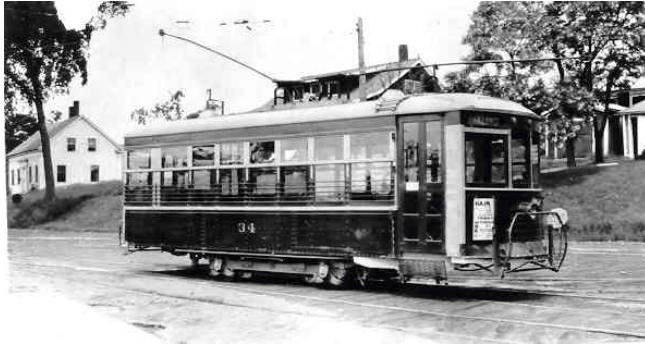


No. #101 - 31 ft. safety car - Wason (1922)

Half-hourly service was instituted at the start and the railway was an immediate success. A large fairgrounds was



located railway providing additional traffic during the fall. By 1907, the line had eight-open. four- convertible cars, one -work car, and one snow plow.



Car No. #34, Birney - Wason (1919)

Consolidation of the lines had been authorized as early as 1909 but it was not until 1911, when the power company became involved, that the merger actually took place. The power company control of both companies on Sept. 5, 1911 and on Nov. 1, it took over the power

business of the old horsecar line. The final formalities took place on Nov. 20 and the name was changed to its final form. As of Dec. 1, 1911, the line owned 10.5 miles of route plus .45 mile of sidings and turnouts for a total of 10.95 track miles.

In 1917 major labor unrest struck the line. In September 1917, during the peak fall activity of the fairgrounds conductors and motormen went on strike to force the line to sign a union



Car No. # 56, 33 ft. closed - Wason (1920)



Carhouse in namesake town - 1935

contract. The company used automobiles to provide transportation to the fairgrounds and a minimal trolley service was operated using linemen and other non-striking railway employees. New employees were hired to break the strike. The strike ended in mid-September with the striking employees out of work.

Modernization of the passenger fleet began in 1918 with the arrival of two double-truck steel closed cars from G. C. Kuhlman. Two similar cars from Wason, were acquired in 1922, one being new and the other second-hand (built in 1920) from an adjacent company also owned by our line's parent power company. Three

single-truck Birneys from Wason were also added to the fleet. A fourth Wason Birney was purchased second-hand in 1926 from the same jointly owned company as the earlier (b. 1920) Wason. When in 1931 the decision was made to abandon that line three more double-truck safety cars were acquired from that line along with another double-truck safety car was purchased from a southern Massachusetts railway.



41 ft. double cab motor flat No. # 1 - company shops  
(former 14 bench open)



Plow No. 6 - (1901)

With the beginning of 1937 the company's rolling stock consisted of eight double-truck safety cars, three single-truck Birneys, two double-truck work cars, three snow plows, and one single truck sand car. In that year, faced with increasing motor vehicle competition, the power company decided to exit the trolley business. A petition to abandon was filed in mid-

summer and granted at the beginning of September with October 11 as the last day of trolley service. The following day a motorbus company began city service in the area and 19 years later (1956) the same local firm with the same president was operating 12 buses over 16 route-miles. In 1976 a community action program began serving the area and does to the present time.



#30, built by Brill, after conversion to a sand car from a second-hand closed car obtained from an adjacent railway in 1927. The car is at the carhouse located in the same town as the initial postcard image.



**Library Committee**



**Library Committee**

The Library Committee will held a committee meeting on May 13, 2023 (9AM - 12PM) with a workshop following (12PM to 2PM).

**(CHANGE OF DATE AND TIME)** - The Library Committee will hold a workshop on on June 9, 2023 from 9:00 AM to 1PM. Cataloguing continued along with cleanup. Cleanup chores include general cleaning in the library, as well as sorting and organizing recently received materials. As the weather warms this spring a cleanup in the containers will also be done.

The Library Committee's meetings on Saturdays are held on a bimonthly basis on the odd months followed by a workshop with standalone workshops from 10AM -2PM on the even months. Updated information will be forthcoming as available.

The Wednesday Evening Workshops are still cancelled - hopefully resumption in the future. There is also discussion of possible additional workshops.

For further information/questions concerning the Library please contact Karen Dooks (781-799-5868).

By Karen Dooks, Chair

Currently scheduled meeting dates for 2023 with business meeting followed by workshop: July 8; September 9, and November 11

Scheduled workshop dates for 2023: **June 9**; August 12; October 14; and December 9

Links:

More than 1000 of the images are accessible online = [https://digitalmaine.com/trolley\\_images/](https://digitalmaine.com/trolley_images/)





## Seashore Library On-Line Resources -

A library resources page originally developed by Amber Tatnall dealing with useful and interesting resource material including, among other things, links to some three decades of the Street Railway Journal and the Electric Railway Journal on line is located at on line resources:

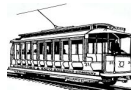
<https://virtual.yccc.edu/c.php?g=238406&p=3225494&preview=7b52901d1f51db2b76cb2a141ca8589c>

or this handy tinyurl works as well: <http://tinyurl.com/zwhndoe> The Library continues to upload material to the various sections of DigitalMaine - The DigitalMaine Repository is a partnership of the Maine State Library, Maine State Archives and community institutions around the state.

The uploads to the new documents area are quite fascinating as they allow you to literally leaf through the documents.

[https://digitalmaine.com/trolley\\_museum/](https://digitalmaine.com/trolley_museum/)  
[https://digitalmaine.com/trolley\\_blueprints/](https://digitalmaine.com/trolley_blueprints/)  
[https://digitalmaine.com/trolley\\_images/](https://digitalmaine.com/trolley_images/)  
[https://digitalmaine.com/trolley\\_documents/](https://digitalmaine.com/trolley_documents/)

Please remember when sending donations for the library to note that it is for Library Development – Fund 951.



*The Main Line* - **Availability** If you are not on our direct distribution list and would like to be, please drop a note to [TheMainLine@ramsdell.com](mailto:TheMainLine@ramsdell.com).

Regards,

Ed Ramsdell, Editor

*The Main Line*

[TheMainLine@ramsdell.com](mailto:TheMainLine@ramsdell.com)

<http://www.trolley museum.org>

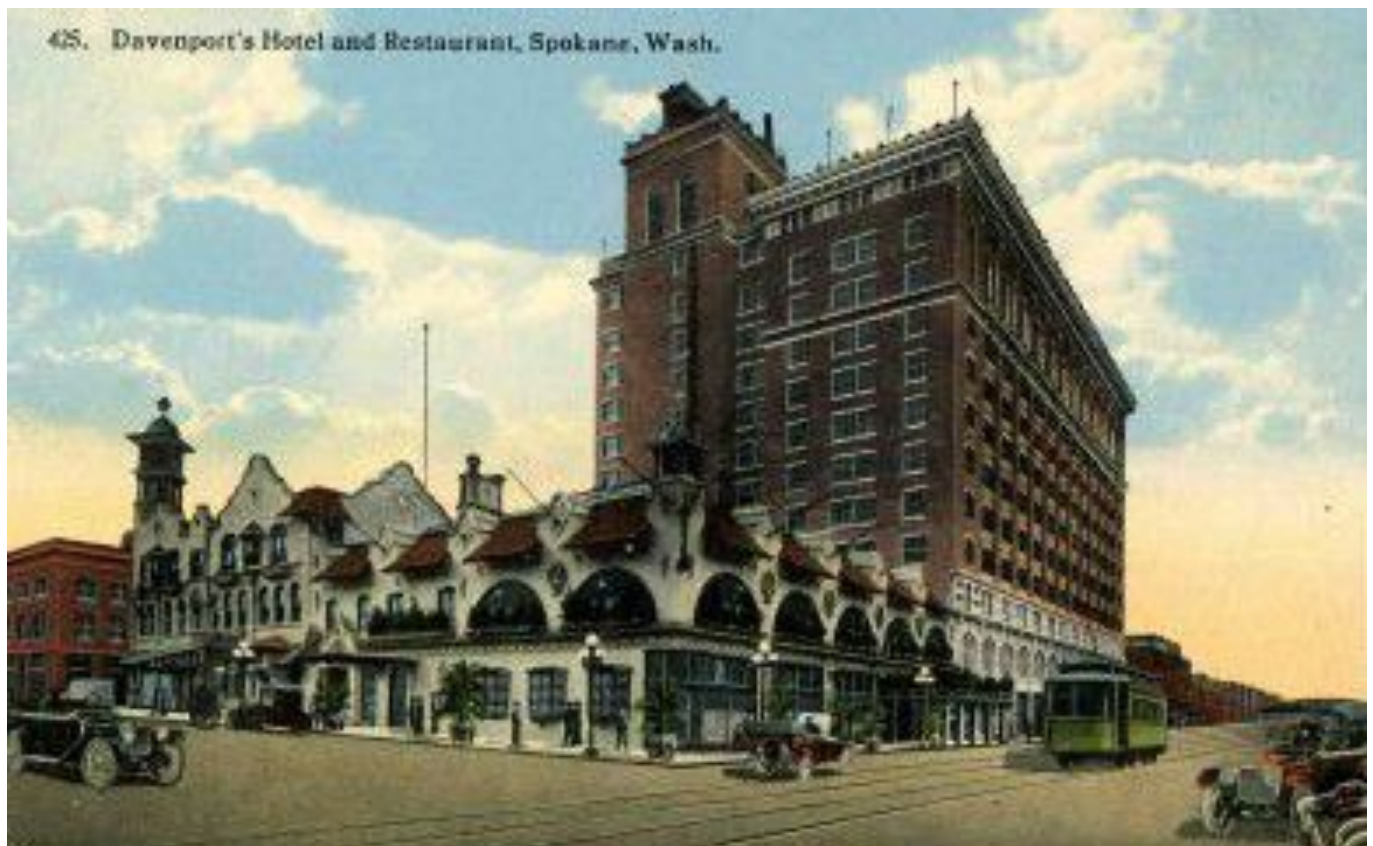


# Spokane, WA - Postcards:

1905



1907





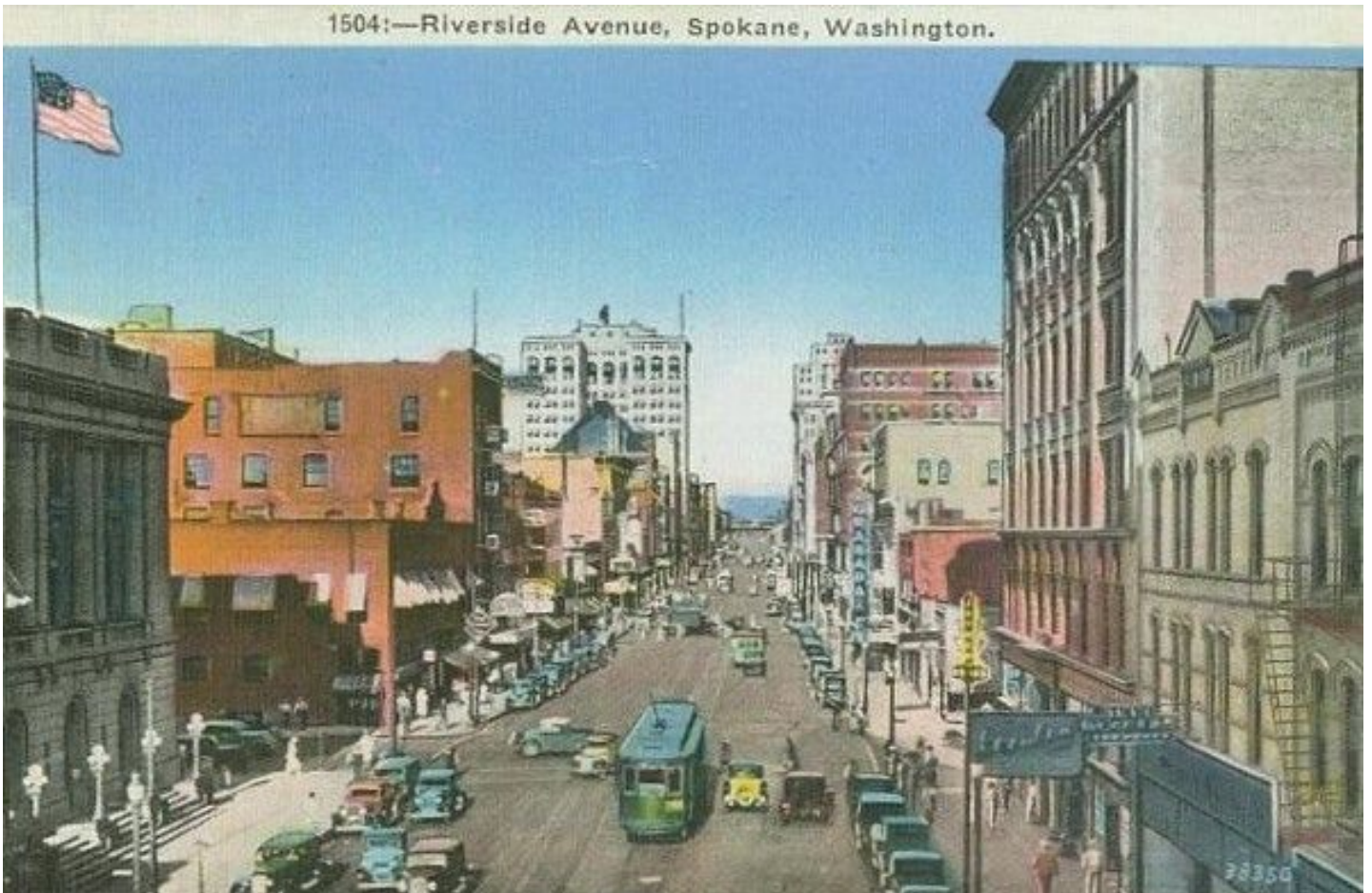
1910

54. Corner of Howard Street  
and Riverside Avenue,  
Spokane, Wash.



1920s

1504:—Riverside Avenue, Spokane, Washington.







# 2023 Season Events!

195 Log Cabin Road | Kennebunkport, Maine

Open 9:30AM-4:30PM on  
Wednesday—Sunday from  
June 1 thru October 29 and  
weekends in May and  
December.

## May



= Experience our Pump Car!



**Saturday, May 6<sup>th</sup>: Opening Day & Maine Day!** Admission for Maine residents is \$2.07; youth 16 and under are free. Special cars in our Maine collection will be featured!

**Sunday, May 14<sup>th</sup>: Mother's Day.** Mothers admissions are free! Behind the Scenes Shop Tours will be offered from 11AM—1PM.

**Saturday, May 20<sup>th</sup> and May 27<sup>th</sup>–May 28<sup>th</sup>: Military Appreciation Days.** Active duty military personnel and veterans' admissions are free!

## June



**Saturday, June 3<sup>rd</sup>: Speeder Day!** Take a ride on one of several Speeders visiting Seashore for the day!

**Sunday, June 4<sup>th</sup>: Dress Like a Conductor Day.** Youth ages 16 and under who dress like a conductor get free admission!

**Saturday June 10<sup>th</sup> Pride Day.** \$3 from each ticket sold this weekend will benefit local LGBTQ+ nonprofits!

**Sunday, June 11<sup>th</sup>: Dog Appreciation Day.** Dogs are welcome every day at the Museum; come today for special dog-friendly door prizes!



**Saturday-Sunday, June 17<sup>th</sup>–18<sup>th</sup>: "I've Driven By Several Times But I've Never Been Down the Driveway" Days.** Free admission to York County, Maine residents who have never been to our museum.

**Sunday, June 18<sup>th</sup>: Father's Day.** Fathers' admissions are free! Behind the Scenes Shop Tours will be offered at 11AM and 1PM.

**Saturday-Sunday, June 24<sup>th</sup>–25<sup>th</sup>: Dino Trolley!**

## Wednesdays in July & August Ice Cream Night!

Join us from 5:30PM–7PM for ice cream sundaes and a trolley ride! Admission is only \$12/per person; children 2 and under are free.

We partner with a different nonprofit from our community at each Ice Cream Night, and they will get 50% of the proceeds! Check out our website Event Calendar for a list of benefiting nonprofits.

## July

**Saturday, July 1<sup>st</sup>: Canada Day.** Canadian residents' admission is free. Special cars in our Canada collection will be on display.



**Wednesday, July 5<sup>th</sup>: Seashore Turns 84!** Celebrate with us with treats!

**Saturday, July 8<sup>th</sup>: Corn Hole Tournament.** Register in advance online. Cash prize! Proceeds benefit Seashore.



**Saturday, July 8<sup>th</sup>: Next Generation Day.** Families become a part of the magic as they become Assistant Trolley Conductors for the day.

**Sunday, July 9<sup>th</sup>: Moxie Day.** Free samples of Moxie and Diet Moxie.

**Saturday, July 15<sup>th</sup>: Crazy Hat Day.** Wear a crazy hat today and get free admission! Regular hats worn on usual days don't meet this definition.

**Saturday-Sunday July 22<sup>nd</sup>–23<sup>rd</sup>: Daniel Tiger Visits Seashore!**

**Saturday-Sunday July 29<sup>th</sup>–30<sup>th</sup>: First Responder Days.** To show our appreciation, first responders' admission is free.

For more information, the most up-to-date schedule,  
and to purchase tickets, please visit  
[www.trolleymuseum.org](http://www.trolleymuseum.org)

**Free Story Time!** Wednesdays – Fridays, July 19<sup>th</sup>– August 18<sup>th</sup> @  
10:30AM Join us for a fun, 30-minute story time. Bring a picnic lunch!

## August

**Saturday, August 5<sup>th</sup>: Boston Day.** Transit artifacts from the Boston collection will be featured.

**Saturday-Sunday, August 12<sup>th</sup>–13<sup>th</sup>: Dino Trolley!**



**Saturday, August 19<sup>th</sup>: Members Day & Open House.** Members have the opportunity to ride and operate cars in our collection and participate in special workshops! Admission is free for all guests.

**Saturday, August 26<sup>th</sup>: Pirate Day.** Aaarghhh! Walk the plank to the museum today dressed as a pirate and get free admission!

**Sunday, August 27<sup>th</sup>: Ham Radio Day.** The York County Amateur Radio Club will be operating throughout the day. "Get on the air" and meet new radio friends from around the world!

## September



**Saturday-Sunday, September 2<sup>nd</sup>–3<sup>rd</sup>: Model Railroad Layout Days.**

Check out model layouts and displays in our Exhibit Room! The Pump Car will be out on Sunday for guests to enjoy, weather permitting.

**Sunday, September 10<sup>th</sup>: Grandparent's Day.** Grandparents' admissions are free!

## Pumpkin Patch Trolley

Fridays-Sundays & Indigenous Peoples' Day

September 22<sup>nd</sup>–24<sup>th</sup>, 29<sup>th</sup> – October 1<sup>st</sup>, 6<sup>th</sup>–9<sup>th</sup> & 13<sup>th</sup>–15<sup>th</sup>

Ride a trolley to Seashore's Pumpkin Patch; all guests get to pick out a pumpkin. Enjoy fun, fall festive family games and activities for all ages!

## October



**Saturday—Sunday, October 21<sup>st</sup> & 22<sup>nd</sup>: Teacher Appreciation Days.**

To show our appreciation, teachers' admission is free! All teachers will receive a free chance to enter to win door prizes!



**Friday — Sunday October 27<sup>th</sup>–29<sup>th</sup>: Happy Trolleyween!** Participate in our "ghost hunt" for a chance to win a free 2024 family membership! Costumes are encouraged.

## December

**Friday-Sunday, December 1<sup>st</sup>–3<sup>rd</sup> and 8<sup>th</sup>–10<sup>th</sup>: Christmas Prelude Trolley Rides!** Ride on heated, decked out trolleys, free hot chocolate, SANTA and more! Check out our website for the details as the event gets closer, and be sure to purchase tickets in advance of your visit.

## Regular Admission

Adults (ages 17 – 59): \$13.00

Adults (ages 60+) and

Children (ages 6–16): \$11.00

Children (ages 3 – 5): \$5.00

Children (ages 0–2): Free!

## Become a Member!

Individual Membership: \$40

Youth up to age 18: \$25

Plus 1 Guest & Family

Memberships: \$60

